

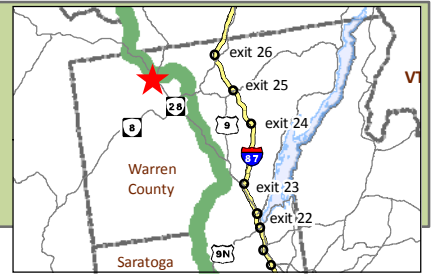


First Wilderness Heritage Corridor

Mountain Biking Trails

Ski Bowl Park Trails

TOWN OF JOHNSBURG, NY



- Surface Type:** Two-track/Single-track
- Difficulty:** Easy through Expert
- Length:** vary in length from 0.3k to 2.3k - see chart below
- Time to Complete:** varies based on trail selection
- Trailhead Coordinates:** -73 59.20 43 41.75
- Trail Notes:** Well-marked, professionally designed and constructed trails for a variety of skill levels from beginner to expert. The Ski Bowl Connector trail links to the Raymond Brook trail for additional options outside of the park.

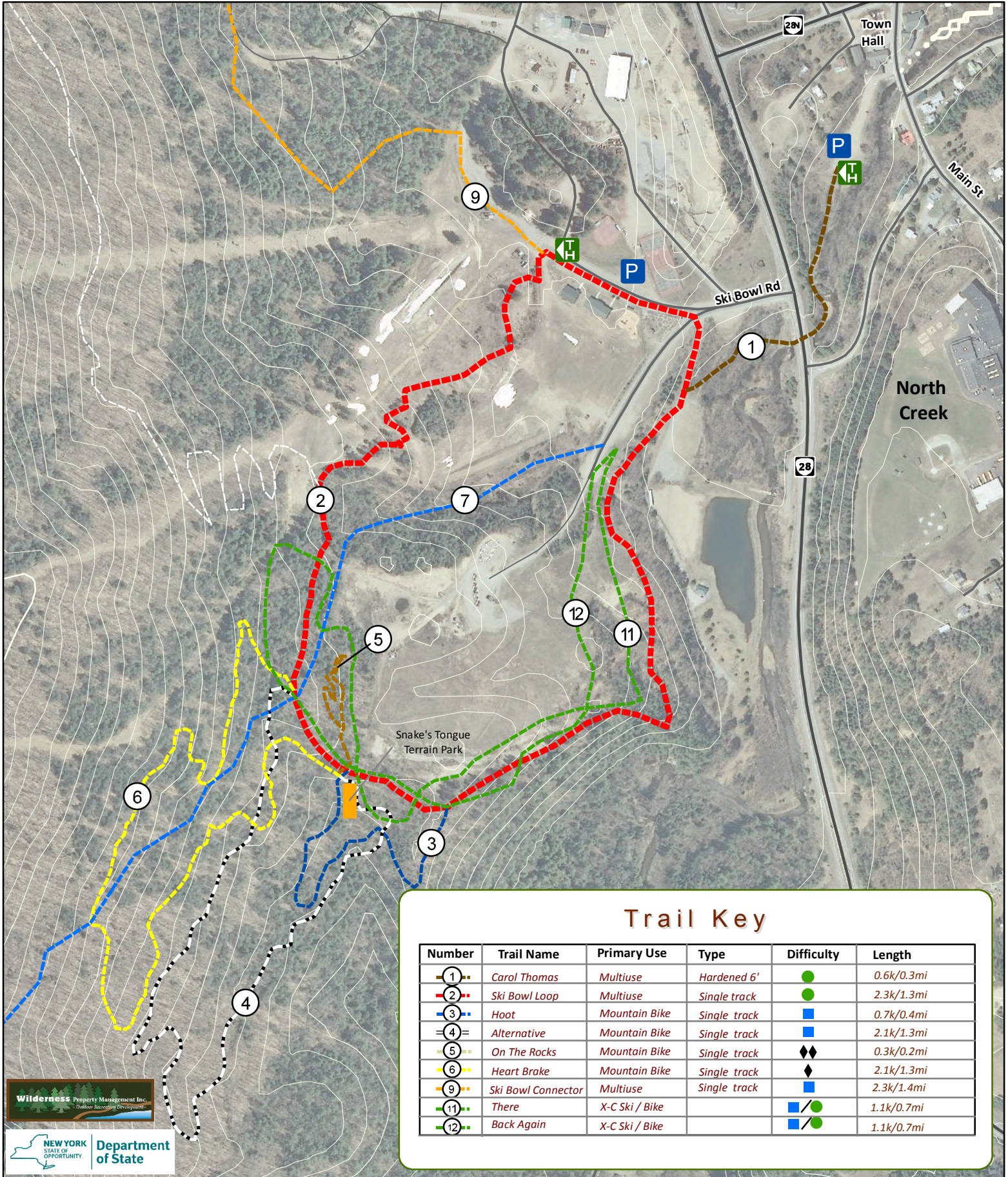


Directions and Parking:

The Carol Thomas trail, which connects to all of the other trails in the parks, begins at the Johnsburg Town Hall. Take Exit 23 off the Northway. Turn onto US9. Go through Warrensburg. Turn left onto NYS 28 and continue for about 16 miles. Turn right onto Main St. The Town Hall with parking will be on your left.

Things to Do Nearby:

The hamlet of North Creek, less than a mile to the northeast of Ski Bowl Park, offers a wide variety of shopping and dining options, as well as a scenic train. Gore Mountain, just to the west of the park, offers serious downhill mountain biking. The Schaeffer Foot Trailhead, located within Ski Bowl Park, provides hiking connections to trails within the Siamese Ponds Wilderness.



Trail Key

Number	Trail Name	Primary Use	Type	Difficulty	Length
1	Carol Thomas	Multiuse	Hardened 6'	●	0.6k/0.3mi
2	Ski Bowl Loop	Multiuse	Single track	●	2.3k/1.3mi
3	Hoot	Mountain Bike	Single track	■	0.7k/0.4mi
4	Alternative	Mountain Bike	Single track	■	2.1k/1.3mi
5	On The Rocks	Mountain Bike	Single track	◆	0.3k/0.2mi
6	Heart Brake	Mountain Bike	Single track	◆	2.1k/1.3mi
9	Ski Bowl Connector	Multiuse	Single track	■	2.3k/1.4mi
11	There	X-C Ski / Bike		■/●	1.1k/0.7mi
12	Back Again	X-C Ski / Bike		■/●	1.1k/0.7mi



0 50 100 200 Meters

0 250 500 1,000 Feet

① Trail Number



Trailhead



Parking

● Easier Trail

■ Intermediate Trail

◆ Expert Trail

— Roads

— 20-foot contours

map prepared by Warren County GIS
June 2015 for NY DOS with funds provided
under Title 11 of the Environmental
Protection Fund.